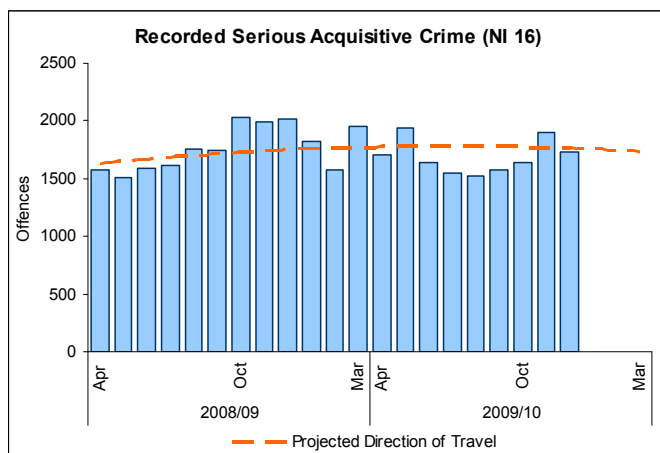
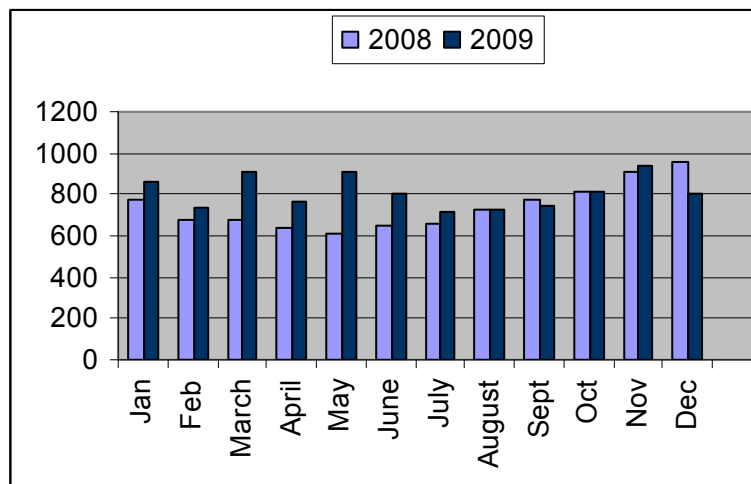


Why is this a priority

The public have the right to be safe and feel safe in their own home, on the streets and the places they go. Tackling serious crime and diffusing tensions in our communities is vital to people’s quality of life. This is a government and local priority and the performance indicators are part of the LAA.



Recorded Burglary Dwellings



Overall Progress to date and outcomes achieved

Overall Summary: (Acquisitive crime with a focus on domestic burglary)

Figures for Serious Acquisitive Crime (which includes domestic burglary, robbery and thefts of or from vehicles), shows in the period April to December 2009 there were 15,220 recorded crimes; which is down 3.8% against previous year (606 fewer offences). Current performance indicates an overall improvement with the predicted year end just outside the LAA target but on target to meet the Policing Plan target.

Leeds’ main focus has been to address domestic burglary. Between April and December 2009 there were 7,224 recorded domestic burglary offences across the city, this is up 7.1% against the previous year (480 more offences). Analysis of Q3 out-turns compared with the same period last year does however show some improvement with an overall 4.9% reduction (132 fewer offences). Progress has been mixed in the priority areas.

Table 1

Comparison of Burglary Dwellings (Wards)	Oct 08	Dec 09	% Change
HYDE PARK & WOODHOUSE	175	221	26%
HEADINGLEY	176	143	-19%
BURMANTOFTS & RICHMOND HILL	124	136	10%
ARMLEY	104	127	22%
GIPTON & HAREHILLS	183	118	-36%
BEESTON & HOLBECK	121	95	-21%

For the areas of focus arising from the CAA (Gipton/Harehills and Armley) the figures in Table 2 below show that burglary levels rose significantly in Armley from May, reaching a peak of 54 in August 09, but that burglary levels have been reducing since then. In Gipton/Harehills, burglary levels peaked in May 09 at 59, but with the exception of a rise in November, have held steady within an overall reducing trend. Of the localities of concern, it can be seen that Hyde Park and Woodhouse and Headingley have been the worst performing areas and, whilst there has been some improvement in Headingley, the Hyde Park and Woodhouse area, with its high student population, is of particular concern, with steadily increasing burglary levels over the year (with the exception of July 09 when students are away from the area). We have been working closely with the two universities to tackle this issue (see achievements and actions) but the impact of this is not yet being felt.

Improvement Priority – TP-2a. Creating safer environment by tackling crime
 CAA Focus - High levels of Burglary in parts of the city (Gipton, Harehills and Armley)
 Accountable Officer – Neil Evans Apr – Dec 2009

Table 2

WARD_NAME	Jan-09	Feb-09	Mar-09	Apr-09	May-09	Jun-09	Jul-09	Aug-09	Sep-09	Oct-09	Nov-09	Dec-09	Grand Total
HYDE PARK & WOODHOUSE	57	46	43	45	53	65	28	74	68	74	87	60	700
HEADINGLEY	33	59	44	51	64	65	41	41	47	65	46	32	622
GIPTON & HAREHILLS	42	39	52	53	59	35	41	30	36	29	49	40	541
BURMANTOFTS & RICHMOND HILL	40	46	53	46	31	34	31	35	37	55	49	32	492
ARMLEY	29	34	39	18	50	42	43	54	47	45	48	34	488
BEESTON & HOLBECK	43	24	42	52	48	32	41	40	30	19	37	39	462

Trends continue to be monitored and we continue to work closely with partners, acting on intelligence to target resources and directing activity in our 'strategic localities of concern' and other hotspot areas.

Achievements since the last report

Improving Intelligence/Tasking

- Commitment has been secured from partners for the Safer Leeds Strategic Intelligence Unit; this includes Community Safety, Probation, Youth Offending Service and the Police. The unit is producing fortnightly intelligence products, presenting evidence and tasking police and partners on a range of actions including activity around offenders, victims and locations. In addition, Education Leeds are now providing attendance information to the case conferences in respect of young offenders and other young people of concern who are subject of offender management, this enables specific intervention plans to be put in place from a safeguarding, diversionary and enforcement perspective.

Location-based work

- A further 439 properties in the localities of concern have been target hardened by commissioned services in Q3 in the localities of concern bringing the total to the end of Q3 to 1770 properties. This supports the long term plan of reducing the opportunity for offenders to commit burglary and provides reassurance to victims and their families. Previous analysis shows that target hardening is effective. Since June 09, the proactive target hardening has focussed in our localities of concern and an impact assessment is scheduled to be undertaken in Q4.
- Around 4000 leaflets 'Is Your Door Unlocked?' have been delivered to households in our strategic localities of concern in Q3 (similar volume delivered in Q2) and supported by doorstep crime prevention advice from PCSO's, in a number of cases piggy backing on Champion operations and other initiatives. As daylight hours shortened a tandem marketing exercise around lighting up was also conducted with articles included in local publications, supermarket and shop windows etc. In addition, 3000 UV property marking pens were delivered to residents in the Beeston and Beeston Hill burglary hotspots along with doorstep advice. Collectively, these initiatives aim to raise awareness of security and actions that residents can take themselves to prevent them becoming a victim. The cost of these initiatives is low and evidence suggests that direct communication with residents helps reassure residents. In these localities there has been a reduction in burglary and as part of a package of interventions this has directly had a positive impact.
- In Q2 a gap analysis of Neighbourhood Watch was conducted resulting in recommendations for three of the burglary localities of concern. In Q3, six new schemes were set up in the Hyde Park area and four in Harehills. A larger crime reduction project is underway with all the residents of the Amberton estate in Gipton including the setting up of Neighbourhood Watch schemes. Increased vigilance at a local level not only increases awareness but brings neighbourhoods together and sends a clear message to potential offenders that residents and partners will not tolerate victimisation and are collectively taking a stand.
- Burglary profiles completed by the Safer Leeds Intelligence Unit have been conducted for properties managed by the three ALMO's, which has raised a number of tasks pertinent to each organisation around security standards, ie door chains & Europrofile locks, garden tidiness and tailored prevention advice. In addition, work undertaken has highlighted issues around methods of entry into ALMO properties and has a direct impact on repair practice e.g. replacing like for like is an issue especially with the Euro-profile lock

Improvement Priority – TP-2a. Creating safer environment by tackling crime

CAA Focus - High levels of Burglary in parts of the city (Gipton, Harehills and Armley)

Accountable Officer – Neil Evans

Apr – Dec 2009

problem reviewing and drawing up standards for boarding up post burglary and repairs. The Safer Leeds burglary action plan seeks to actively secure commitment from each ALMO to reduce burglary in their localities. To support ALMOs a bid for LPSA funding has been put forward to introduce burglary alarms in streets of continued concern.

- In Q3, there have been a total of six Operation Champions in three of our localities of concern (Beeston & Holbeck, Gipton/ Harehills, Burmantofts & Richmond Hill). Evidence from previous results analysis shows that these type of multi-agency operations are valued by local residents; enhance front line service working and send a clear message to potential offenders that the communities and services are working together to reduce crime and grime.

Work with victims or those at higher risk

- The Crime Reduction Officers together with PCSO's have been tasked with visiting, reviewing security and providing advice to residents and wardens across the City's sheltered housing schemes from October 2009 onwards. This is a reassurance tool and is one stage of a wider programme of identifying potential vulnerable victims and properties, as part of the 'Securing Homes' strategy.
- Secure Homes funding (Home Office) has also enabled the purchase of £10,000 worth of Computrace licences which are being offered to students in Leeds with a view to reducing the theft of laptops in burglaries. One laptop has recently been stolen and tracked and arrests made. A further sum has been secured and a tendering process is underway for additional licences. The theft of laptops is prevalent in student areas and this is another tool currently being used in our localities of concern. Safer Leeds has actively publicised this issue and increased awareness together with additional protective measures that students can take. Feedback from students shows that many are now purchasing similar products.
- Secure Homes funding (Home Office) has enabled the Leeds Universities & Colleges Crime Reduction Partnership (LUCCRP) to recruit and train twelve student Neighbourhood Watch Area Co-ordinators. Currently, they are in the process of recruiting students to set up individual schemes in the Hyde Park & Headingley areas – these will include burglary prevention initiatives. This scheme is a first in the country, supporting students to get actively involved in reducing crime and disorder.

Work with offenders/those at risk of offending

- In Q3 the Prolific and Priority Offenders (PPO) list has been refreshed and includes 90 adults who are causing the most harm in our communities in terms of burglary and 54 DYOs (Deter Young Offenders), again with a greater focus on offenders linked to burglary. The intention is to manage their offending behaviour through a variety of interventions, ranging from Catch & Convict (Police/Probation/Courts) to Rehabilitation and Resettle (Probation and Leeds Integrated Offender Management Service). All of these offenders are now subject to regular multi-agency case conference reviews and all have intervention plans in place. The previous PPO cohort for Leeds was 213 individuals, and last years outturn showed a 45% reduction in convictions within this cohort against a target of 15%. This evidence suggests that targeting nominals linked to burglary is likely to have a positive impact on reducing reoffending.
- In Q3 briefing packs reflecting the refreshed cohort were prepared for CCTV staff, they are now actively looking out for PPOs/ DYOs and feeding back information on their activities and associates. The 3 Police Divisional Intelligence Units are also providing daily descriptions of suspects to CCTV staff to be on the lookout for. In addition, the ASBU have been tasked with reviewing and maximising use of all anti-social behaviour legislation against all our PPOs/ DYOs.
- In Q3 the burglary tasking group has commissioned Signpost to engage with 40 young people who have been identified at risk of offending but who are not statutorily engaged with the Youth Offending Service. Work is progressing around voluntary engagement exploring opportunities to change their behaviour, individually and within their immediate family. This work also has been extended to include parenting skills and community involvement.

Challenges/Risks (Serious Acquisitive Crime)

- Securing continued investment and partnership buy-in to support key activity and targeting resources in areas of need.
- Co-ordination and management of multi-agency intervention plans targeting those people causing the most harm.
- A refreshed offenders cohort will require us to negotiate a new NI30 target for 2010-11
- Economic climate and potential for this to impact on crime levels, including burglary.
- Balancing enforcement activity with prevention and diversionary activity with long term support for those at risk of becoming involved in criminality.
- Involvement of all key partners that hold information and intelligence around problematic individuals, families and their associates.
- Embedding designing out crime principles in all regeneration projects across the city.

<u>Council / Partnership Groups</u>	<u>Safer Leeds</u>		
<u>Approved by (Accountable Officer)</u>	<u>Simon Whitehead</u>	<u>Date</u>	<u>25 Feb 2010</u>
<u>Approved by (Accountable Director)</u>	<u>Neil Evans</u>	<u>Date</u>	<u>25 Feb 2010</u>

Improvement Priority – TP-2a. Creating safer environment by tackling crime

CAA Focus - High levels of Burglary in parts of the city (Gipton, Harehills and Armley)

Accountable Officer – Neil Evans

Apr – Dec 2009

Key actions for the next 6 months				
	Action (Desired Achievements)	Contributory Officer / Partner	Milestone / Actions	Timescale
1	Continuation and development of the city wide intelligence product and tasking of partners.	Simon Hodgson	Fortnightly tasking and review meeting	Ongoing
2	Streets in the Hotspot areas continue to be pro-actively target hardened	Rob Kirton	Burglary rates decrease in these streets	March 2010
3	CCTV operators linking into tasking arrangements concentrating on known individuals and crime hot spot areas	Wayne Clamp	Photos and descriptions of nominals being sent to CCTV.	October – March 2010
4	Continue with the review of Automatic Number Plate Recognition (ANPR) across the city with NPTs with a focus on burglary.	Simon Whitehead	A planning meeting has been arranged for October, this will provide an opportunity to undertake a scoping exercise and plan a schedule of work for the next 5 months.	March 2010
5	Proactively manage PPO & DYO cohort	Jim Willson / Jim Hopkinson / Dave McDougal	All individuals to have an assessment and intervention plan in place. Monthly case conferencing process in place in each police division. Greater involvement of partners and sharing of information. CPS to be engaged and involved in the process. Trigger point for release management planning in respect of prisoners with 12month and longer sentences to be 5 months prior to release.	Ongoing
6	Establish a process for supporting the divisional case conferences in dealing with complicated networks (families and associates at risk) for PPOs / DYOs	Simon Hodgson	Conduct family / associate network analysis with recommendations for subsequent partnership activity.	March 2010
7	Pilot a process for following up on young people who fail to attend or subsequently absent themselves from the BESD SILC (Behaviour, Emotional, Social Difficulties Specialist Learning Centre)	Amanda Bradley/Jo Walton	Establish a process in conjunction with the Safer Schools Officer and determine a central point of contact; circumstances under which action will be taken and what this will specifically involve.	February 2010
8	Conduct negotiations with Pupil Referral Unit (PRU) head teachers to develop SSP and involve with burglary reduction measures as appropriate with individual students.	Bob Bowman	Potential for Education Leeds to fund an SSP Officer to provide coverage for the PRU's where currently there are none.	June 2010

Improvement Priority – TP-2a. Creating safer environment by tackling crime

CAA Focus - High levels of Burglary in parts of the city (Gipton, Harehills and Armley)

Accountable Officer – Neil Evans

Apr – Dec 2009

9	Deliver a range of crime prevention initiatives that address student vulnerability	Steve Lavelle	WalkSafe scheme re-launched in October 2009, recruit and train 12 student NW co-ordinators, commission crime reduction DVDs produced by students for students to raise awareness of crime, distribute personal alarms and crime prevention literature. The 12 student area NHW coordinators to be involved in local Environmental Visual Audits EVAs). Involvement with LUCCRP to influence initiatives with students. 'Criminal Opportunity Profiling of Streets' style initiative involving students, Hyde Park NPT and Safer Leeds to take place in February 2010, targeting in particular insecure properties in streets with high student occupation.	Ongoing
10	Greater involvement of ALMO's and RSL's in burglary reduction strategy and the tasking process.	Steve Lavelle / Rob Kirton	Meetings held with ALMO and RSL C/E's. Problem profiles produced. Involvement with Leeds Housing Partnership Forum to negotiate on a monthly basis with a view to including a tasking and coordination element.	March 2010
11	Establish and develop links with Regional Crimestoppers Team	Jim McNeil / Andy Mills	Meetings held with regional rep, David Hunter to be progressed. Mr Hunter has attended a tasking meeting and funded advertising on buses through the crime hotspots in Leeds.	March 2010

Performance Indicators

Performance indicators aligned to the Improvement Priority

Reference	Title	Owner	Frequency & Measure	Rise or Fall	Baseline	2008/09 Result	2009/10 Target	2009/10 Quarter 3	Current Predicted Full Year Result	Data Quality
NI 16	Serious acquisitive crime rate	Community Safety	Monthly Number per 1000 population	Fall	27.0 per 1000 population (2007/08)	27.8‰	25.8‰	6.9‰	26.6‰	No concerns with data